

Pattern 578



Pattern 578

Width : 119 stitches

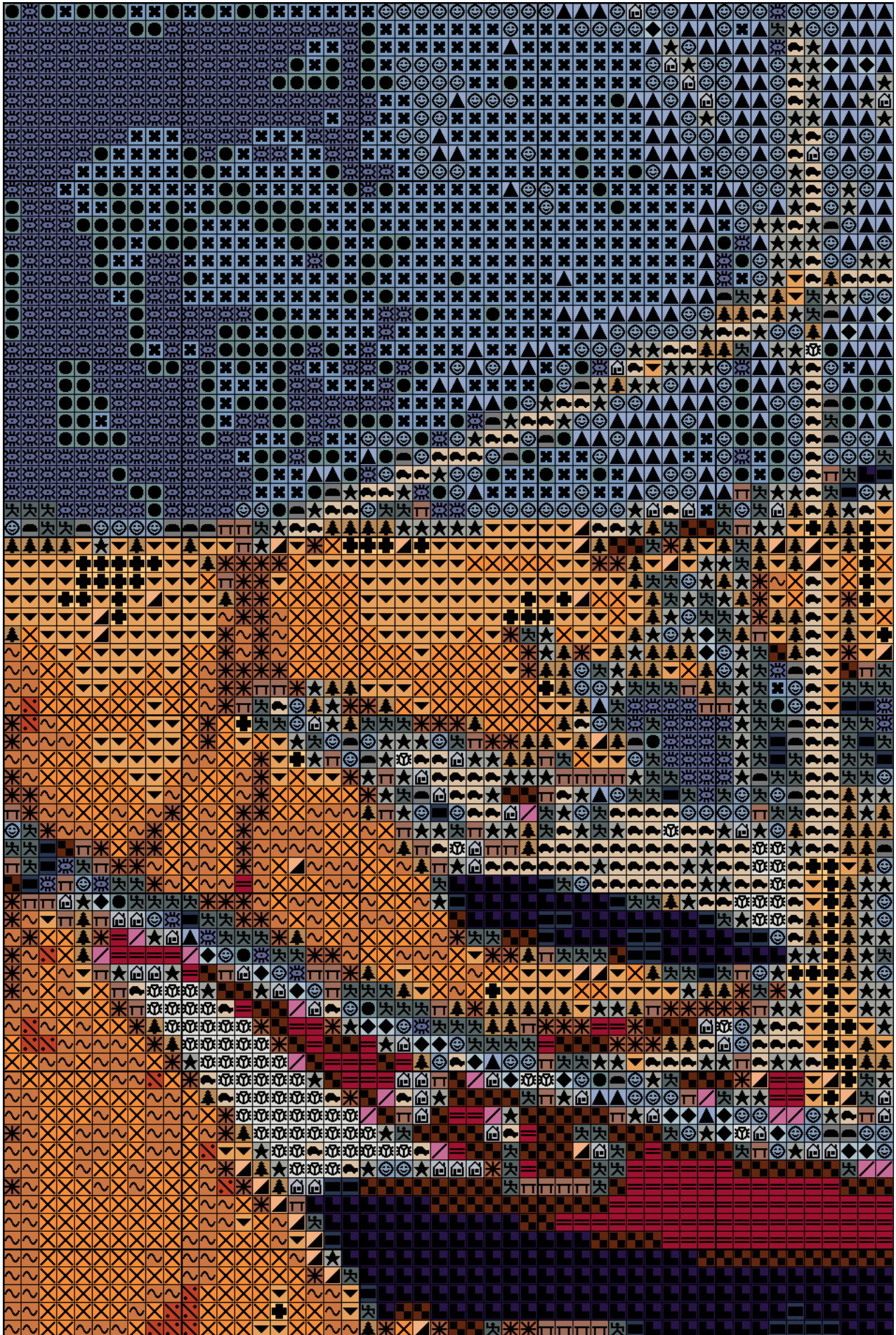
Height : 84 stitches

Used floss brand : Anchor

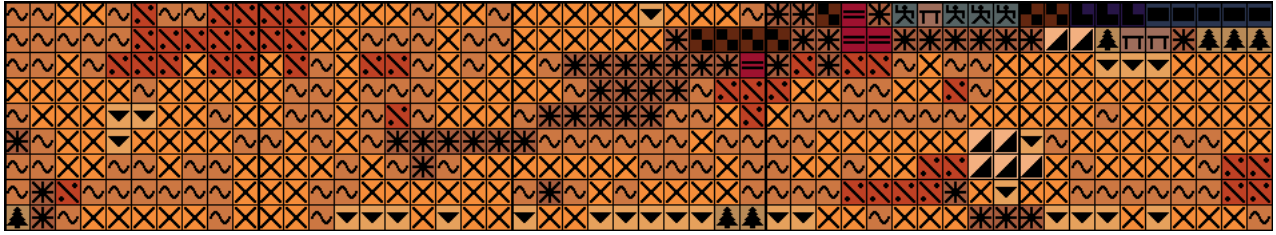
Used colours (26):

●	920
☀	142
⊞	976
☺	136
▲	975
🏠	1033
◆	161
⚡	851
★	903
🚗	388
■	123
🚗	398
🌄	8581
🌲	855
▼	363
📐	127
π	898
⊕	305
📐	890
📐	381
✳	371
✕	1001
∞	308
∕	1015
∕	92
≡	20

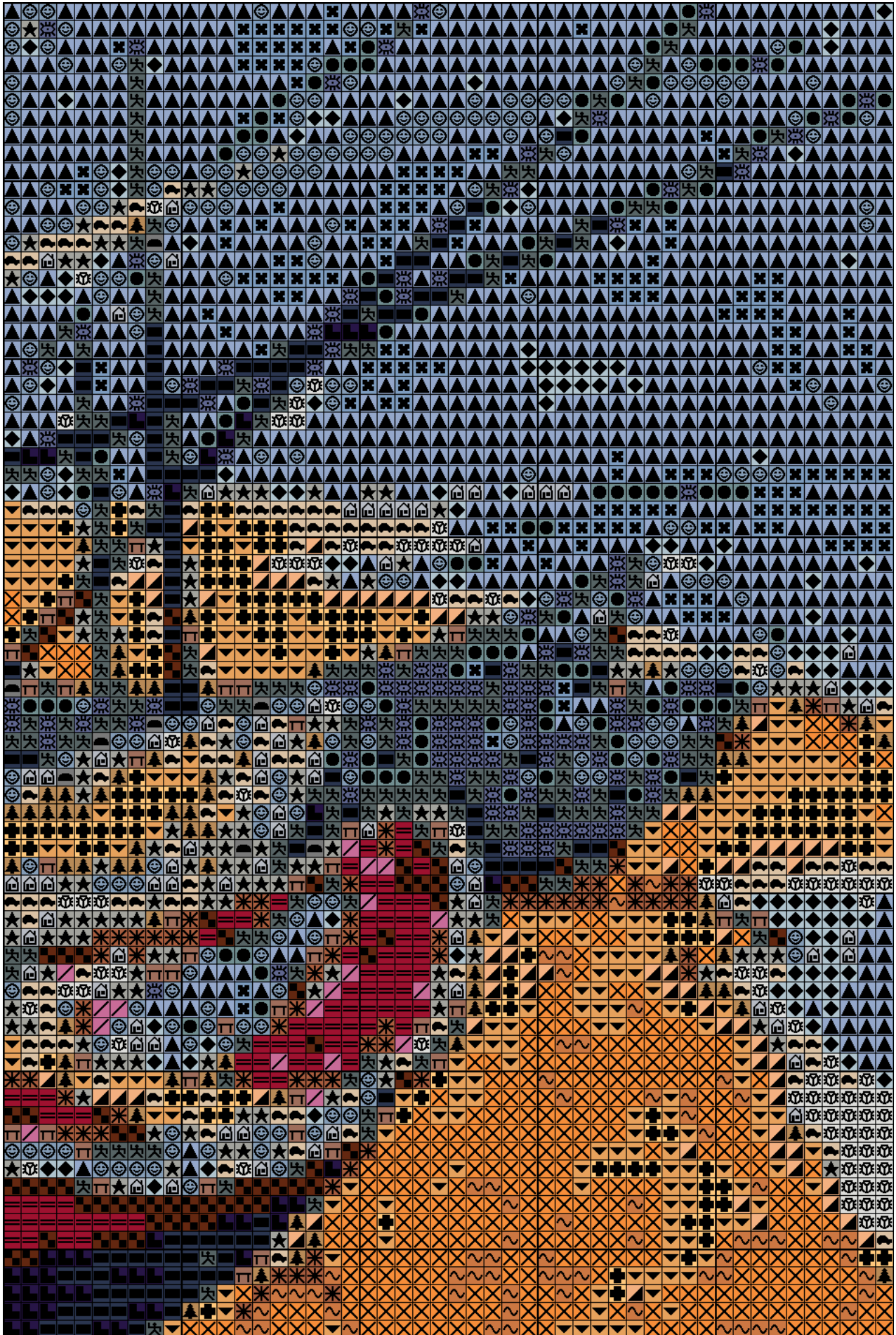
Pattern 578



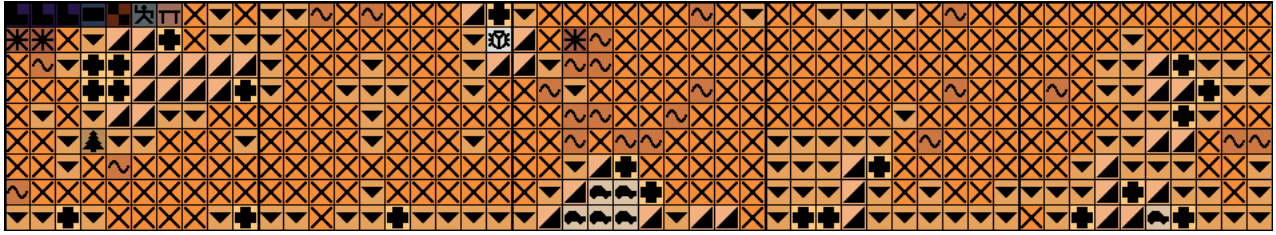
Pattern 578



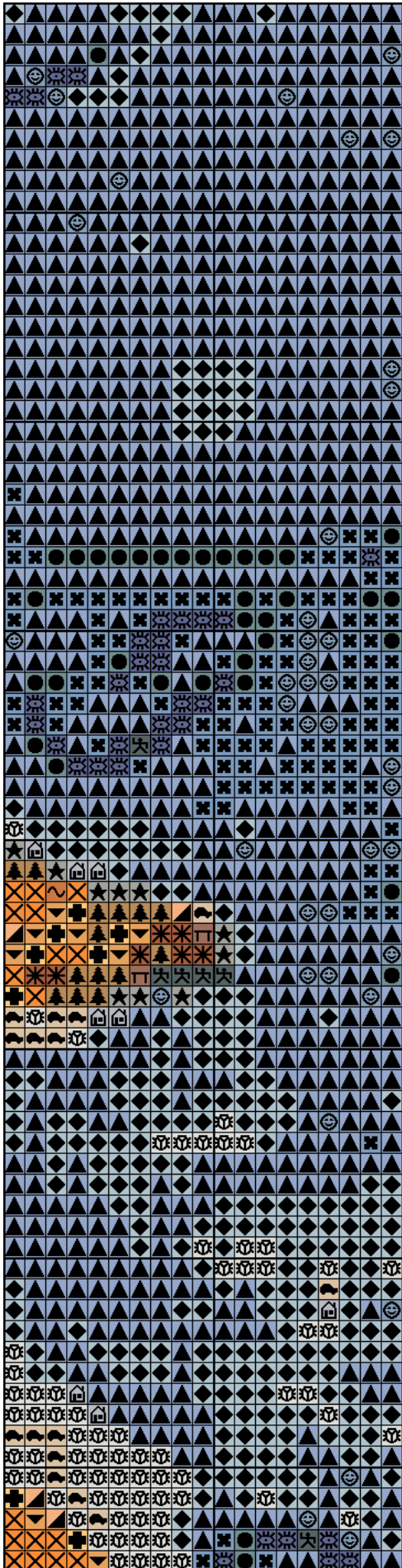
Pattern 578



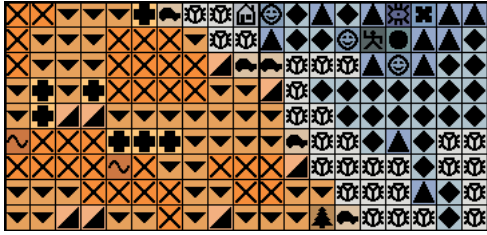
Pattern 578



Pattern 578



Pattern 578



Pattern 578

Pattern map

